



940nm 6mW Multi-Mode VCSEL Chip

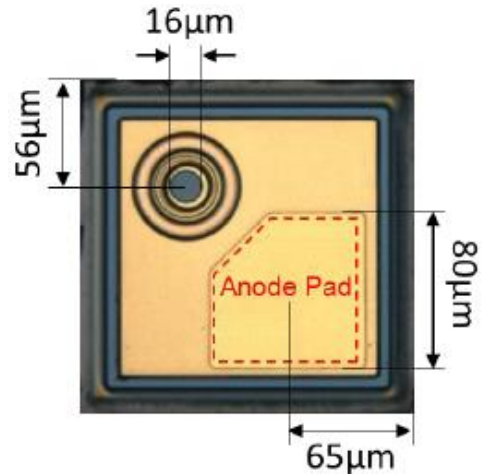
Part No. VCC-94A6H

Features

- 940nm multimode VCSEL
- Typical 6mW optical output power at 9mA
- Chip size: 175um x 175um
- Chip thickness: 100um

Applications

- Sensor light source
- Consumer electronics



Specifications

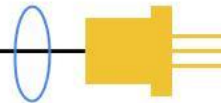
Absolute Maximum Ratings				
Parameters	Symbol	Rating	Unit	Conditions
Storage Temperature	T _{stg}	-40 to 150	°C	
Operating Temperature	T _{op}	-20 to 85	°C	
Maximum CW Current	-	12	mA	
Laser Reverse Voltage	-	5	V	
Human-Body Model	-	200	V	JESD22-A114
Machine Model	-	25	V	JESD22-A115
Maximum Package SMT Solder Reflow Temperature	-	260	°C	10 seconds

Note: The maximum CW laser current in the Absolute Maximum Ratings is valid for the operating temperature noted at the table above. Stresses beyond those listed under Absolute Maximum Ratings may cause permanent damage to the device.

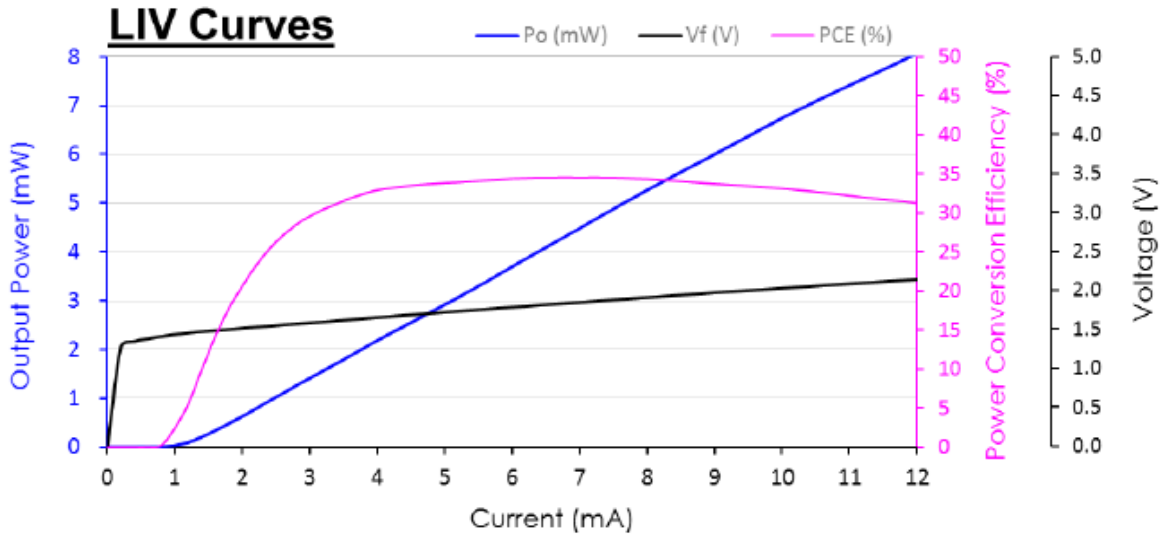
Electro-Optical Characteristics (T _a =25°C unless otherwise stated)						
Parameters	Symbol	Min.	Typ.	Max.	Unit	Conditions
Threshold Current	I _{th}	1	2	2.5	mA	
Forward Voltage	V _f	1.7	1.9	2.1	V	I _f =9mA
Slope Efficiency	η	0.6	0.8	1	W/A	I _f =9mA
Optical Output Power	P _o	5	6	7	mW	I _f =9mA
Center Wavelength	λ _c	930	940	950	nm	I _f =9mA
Beam Divergence	θ	-	15	20	°	I _f =6mA (Full Width 1/e ²)
		-	18	22		I _f =9mA (Full Width 1/e ²)

Notes:

- Forward Voltage (V_f) measurement allowance is ±0.1V.
- Center Wavelength (λ_c) measurement allowance is ±1.5nm.
- Others measurement allowance is ±5%.
- All parameters except mentioned are measured at I_f=9mA, T_a=25°C, CW.

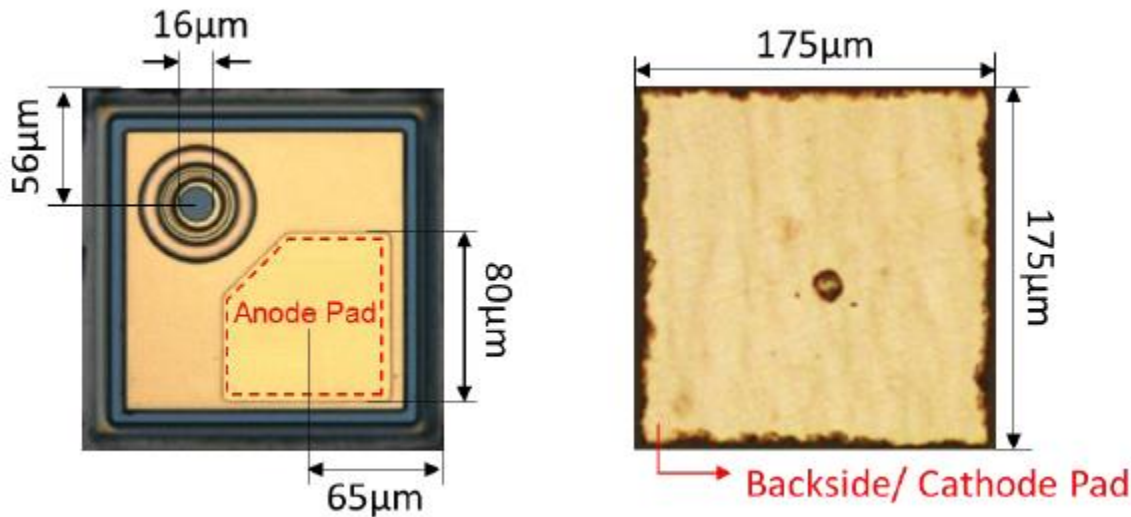


Typical Characteristics



Note: Data measure at ambient temperature 25°C.

Outline Dimensions (unit: μm)



Specification	Unit	Min.	Typ.	Max.	Condition
Number of emitters	ea	1			
Length (X), Width (Y)	um	160	175	190	
Thickness	um	90	100	110	
Emitter surface area diameter	um	-	16	-	
Anode pad size (Bond pad)	um	77	80	83	Emitter side
Cathode pad size	um	160	175	190	Backside

Note: Dimension tolerance +/-3um unless specified otherwise.

Additional Notes

- The inherent design of this component causes it to be sensitive to electrostatic discharge (ESD). To prevent ESD-induced damage and/or degradation to equipment, take normal ESD precautions when handling this product.
- Specifications are subject to change without notice.

Lasermate Group, Inc.

19608 Camino De Rosa, Walnut, CA 91789, USA

Tel: (909)718-0999 | Fax: (909)718-0998 | E-mail: info@lasermate.com | URL: <http://www.lasermate.com>