



## 4.25Gbps 1260nm~1620nm InGaAs PIN plus AGC Pre-Amplifier Photodiode in TO-46 Package, 5-pin

Part No. PDT-A13P5-4GB3

### Features

- 1310nm/1550nm InGaAs PINTIA 5 pin TO
- Industry standard TO-46 package with short cap lens and tab-less
- Optimized for fiber optic application
- Design for long wavelength 4.25Gbps applications
- Photocurrent monitoring available
- Single power supply +3.3V

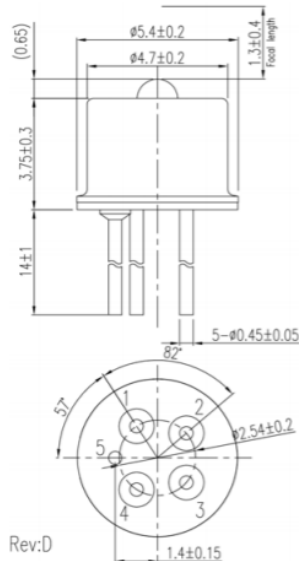


### Specifications

Electro-Optical Characteristics (T <sub>A</sub> =25°C)						
Parameters	Symbol	Min.	Typ.	Max.	Unit	Conditions
Power Supply	V <sub>CC</sub>	3.0	3.3	3.6	V	
Supply Current	I <sub>CC</sub>	30	34	42	mA	No loads
Differential Responsivity	R <sub>d</sub>		2.2		mV/uW	λ=1310nm, R <sub>load</sub> =100ohm, P=-18dBm
Single Ended Responsivity	R <sub>s</sub>		1.1		mV/uW	λ=1310nm, R <sub>load</sub> =50ohm, P=-18dBm
Small-Signal Bandwidth	BW		2.5		GHz	P=-18dBm
Low-Frequency Cut Off	LF		15		kHz	
Rise/Fall Time (20-80%)	tr/tf			150	ps	λ=1310nm, P=-18dBm
Saturation Power	P <sub>sat</sub>	0			dBm	
Single Ended Output Impedance	R <sub>O</sub>		50		ohm	
Wavelength	λ	1260		1620	nm	
Sensitivity				-23	dBm	λ=1310nm, @4.25Gbps, PRBS7, ER=6dB, BER=10 <sup>-10</sup>

Absolute Maximum Ratings					
Parameters	Min.	Max.	Unit	Conditions	
Storage Temperature	-40	100	°C		
Operating Temperature	-40	85	°C		
Lead Solder Temperature		260	°C	10 seconds	

### Outline Dimensions (unit: mm)



#### Pinout:

Pin no.	Function
1	Dout(+)
2	Vcc
3	Isource
4	Dout(-)
5	Gnd

Note: Specifications are subject to change without notice.

**Lasermate Group, Inc.**

19608 Camino De Rosa, Walnut, CA 91789, USA

Tel: (909)718-0999 | Fax: (909)718-0998 | E-mail: info@lasermate.com | URL: <http://www.lasermate.com>