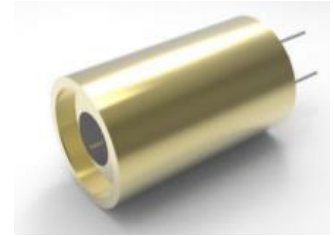


CME Series 405nm-655nm Laser Modules

With Small Size $\Phi 12\text{mm} \times 20\text{mm}$, Output Power up to 200mW

Overview

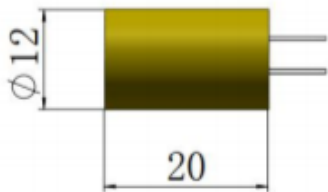
The CME series laser module is available in the wavelength spectral range from 405nm to 655nm and with compact dimensions of $\Phi 12\text{mm} \times 20\text{mm}$ and output power levels up to 200mW. The laser module features small size, high output power, and long operating lifetime. With its compact design, low cost and easy operation, the laser module is the ideal choice for being designed and integrated into OEM instruments and systems, and for end user applications in scientific research, medical treatment, and industrial development.



Specifications

Model Number	CME405-XF6	CME450-XF6	CME635-XF3	CME637-XF3	CME640-XF3	CME655-XF3
Wavelength (nm)	405	450	635	637	640	655
Wavelength tolerance (nm)	± 5	± 5	± 5	± 5	± 5	± 10
Output power (mW)	~200 (X=200)	~30 (X=30)	~100 (X=100)	~100 (X=100)	~100 (X=100)	~100 (X=100)
Transverse mode	Near TEM ₀₀					
Operating mode	CW					
Beam diameter at aperture (1/e ² , mm)	~3.5					
Beam divergence, full angle (mrad)	<0.5	<1.0	<1.0	<1.0	<1.0	<1.0
Operating temperature (°C)	15-30					
PCB driver	6V DC	6V DC	3V DC	3V DC	3V DC	3V DC
Expected lifetime (hours)	10000					
Dimensions	Brass housing	$\Phi 12\text{mm} \times 20\text{mm}$				
	PCB driver	16(L) x 11(W) mm ²				
Weight	0.013kg					
Warranty	5 months					
Remarks	The housing of laser module has non-polarity.					

Outline Dimensions (unit: mm)



Additional Notes

- The CME series laser modules are designated solely as OEM components for incorporation into the customer's end products. Therefore, it is the customer's responsibility to comply with the appropriate requirements of FDA 21CFR, section 1040.10 and 1040.11 for complete laser products. For the code of FDA regulations, please refer to [FDA Performance Standards for Light-Emitting Products](#) for detailed information.
- Additional heat sink may be needed if the laser module is operated continuously for a long period of time.
- Specifications are subject to change without notice.

Lasermate Group, Inc.

19608 Camino De Rosa, Walnut, CA 91789, USA

Tel: (909)718-0999 | Fax: (909)718-0998 | E-mail: info@lasermate.com | URL: <http://www.lasermate.com>