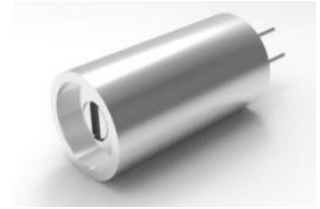


CMD Series 405nm-655nm Laser Modules

With Compact Dimensions $\Phi 8\text{mm} \times 15\text{mm}$, Output Power up to 50mW

Overview

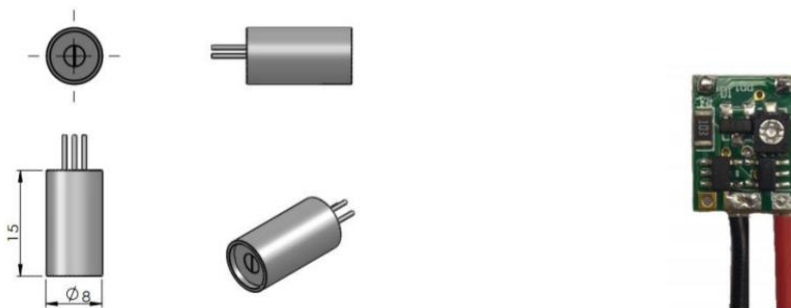
The CMD series laser module is available in the wavelength spectral range from 405nm to 655nm and with compact dimensions of $\Phi 8\text{mm} \times 15\text{mm}$ and output power levels up to 50mW. The laser module features small size, high output power, and long operating lifetime. With its compact design, low cost and easy operation, the laser module is the ideal choice for being designed and integrated into OEM instruments and systems, and for end user applications in scientific research, medical treatment, and industrial development.



Specifications

Model Number	CMD405-XF6	CMD450-XF6	CMD635-XF3	CMD637-XF3	CMD640-XF3	CMD655-XF3
Wavelength (nm)	405	450	635	637	640	655
Wavelength tolerance (nm)	± 5	± 5	± 5	± 5	± 5	± 10
Output power (mW)	~50 (X=50)	~30 (X=30)	~50 (X=50)	~50 (X=50)	~50 (X=50)	~50 (X=50)
Transverse mode	Near TEM ₀₀					
Operating mode	CW					
Beam diameter at aperture (1/e ² , mm)	~3.5					
Beam divergence, full angle (mrad)	<0.5	<1.0	<1.0	<1.0	<1.0	<1.0
Operating temperature (°C)	15-30					
PCB driver	6V DC	6V DC	3V DC	3V DC	3V DC	3V DC
Expected lifetime (hours)	10000					
Dimensions	Brass housing	$\Phi 8\text{mm} \times 15\text{mm}$				
	PCB driver	13(L) x 10(W) mm ²				
Weight	1.5g					
Warranty	5 months					
Remarks	The housing of laser module has non-polarity.					

Outline Dimensions (unit: mm)



Additional Notes

- The CMD series laser modules are designated solely as OEM components for incorporation into the customer's end products. Therefore, it is the customer's responsibility to comply with the appropriate requirements of FDA 21CFR, section 1040.10 and 1040.11 for complete laser products. For the code of FDA regulations, please refer to [FDA Performance Standards for Light-Emitting Products](#) for detailed information.
- Additional heat sink may be needed if the laser module is operated continuously for a long period of time.
- Specifications are subject to change without notice.

Lasermate Group, Inc.

19608 Camino De Rosa, Walnut, CA 91789, USA

Tel: (909)718-0999 | Fax: (909)718-0998 | E-mail: info@lasermate.com | URL: <http://www.lasermate.com>