



Model No. LED-730P-ALA6M
730nm FAR RED FIBER COUPLED LED SYSTEM

The LED-series 730nm far red fiber coupled LED system is constructed with features of stable output intensity, long lifetime and high power. It is widely used in spectroscopy, optogenetics, fluorescence excitation and many other applications.

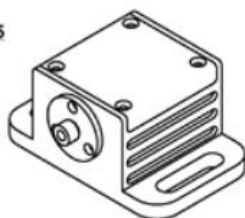
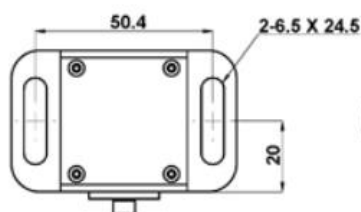
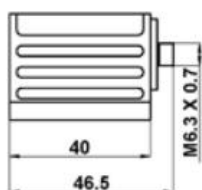
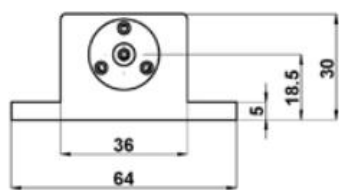
SPECIFICATIONS

| | | |
|--|--|---|
| Model No. | LED-730P-ALA6M | |
| Nominal wavelength (nm) | 730 | |
| Color | Far Red | |
| Bandwidth FWHM (nm) | 37 | |
| Fiber connector | SMA905 | |
| Numerical aperture (NA) | 0.22 | |
| Typical $\phi 600\mu\text{m}$ core fiber output power SMA (mW) | 1.5 | |
| Maximum current CW (mA) | 1000 | |
| Forward voltage (V) | 2.3 | |
| Output power stability | <5% | |
| LED head | 64 (L) x46.5 (W) x30 (H) mm ³ | |
| Power supply | Input voltage | 5V DC |
| | Dimensions | 114 (L) x78 (W) x71 (H) mm ³ |
| Operating mode | CW (M=C); CW with TTL modulation: 1Hz-1kHz (M=T1), 1kHz-10kHz (M=T2); CW with Analog modulation: 1Hz-1kHz (M=A1), 1kHz-10kHz (M=A2) | |
| Operating temperature (°C) | 10 to 35 °C | |
| Typical lifetime (h) | ~10,000 | |

Note: The above specifications are subject to change without notice.

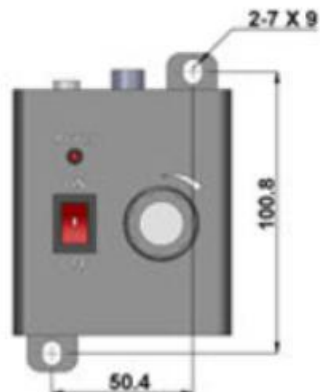
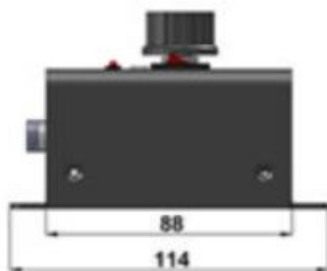
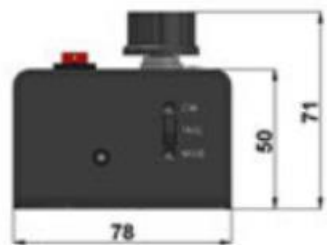
MECHANICAL OUTLINE (unit: mm)

LED Head





Power Supply



Note: The above specifications are subject to change without notice.